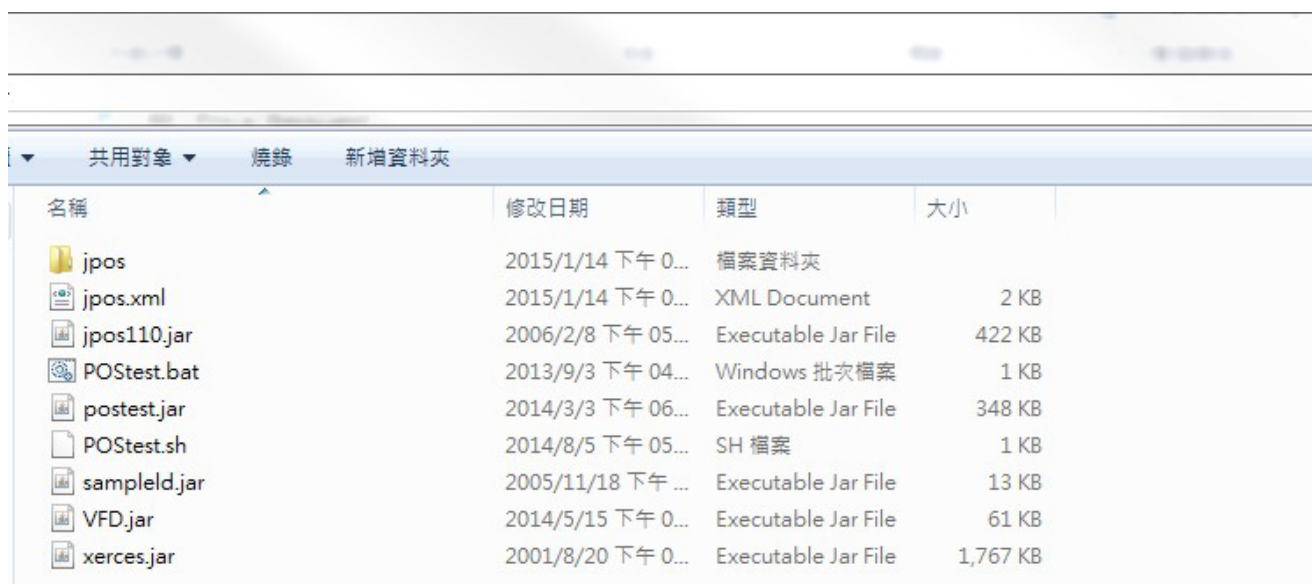


VFD JPOS

Testing Guide

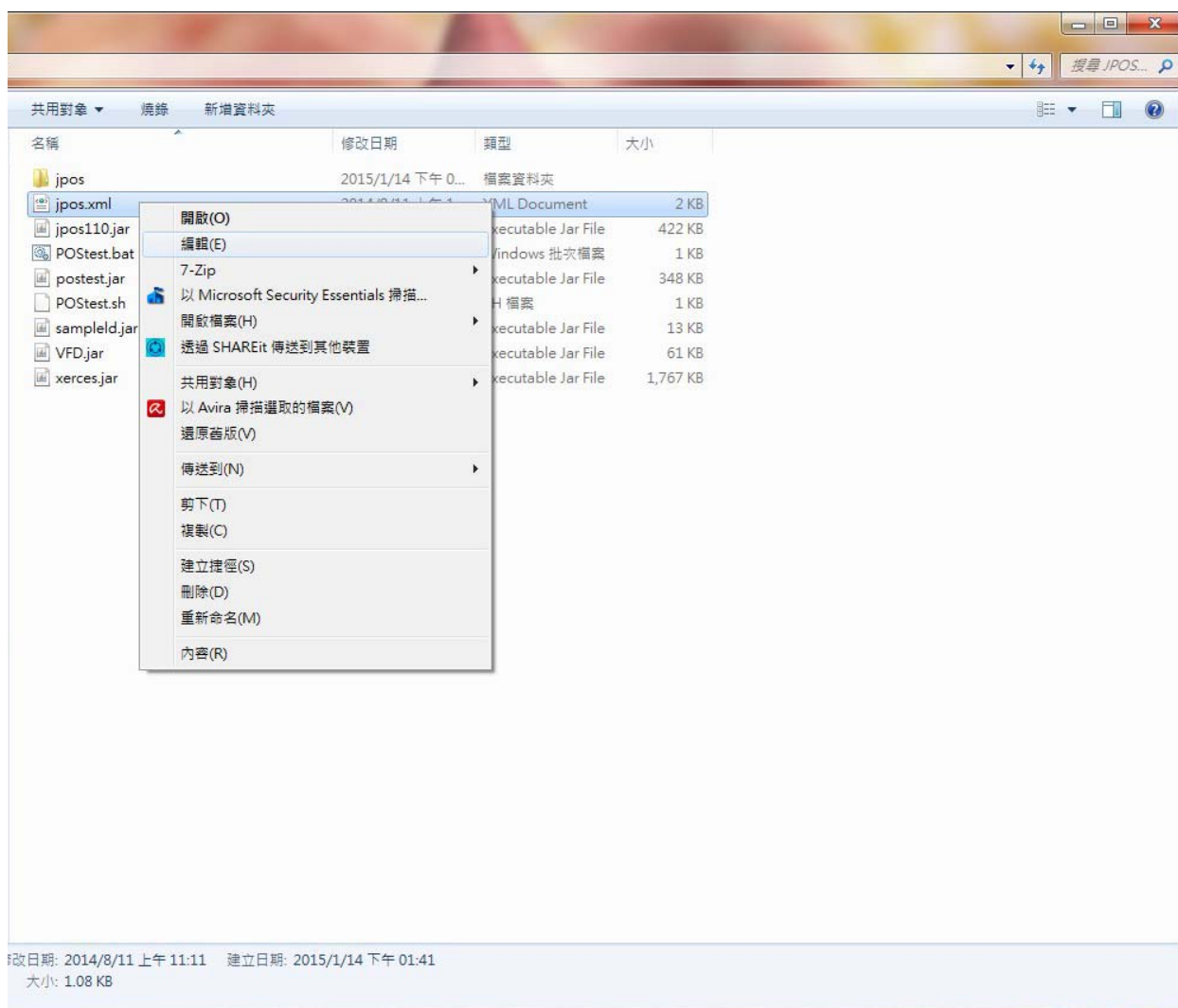
1. Please Extract the file and open the folder.



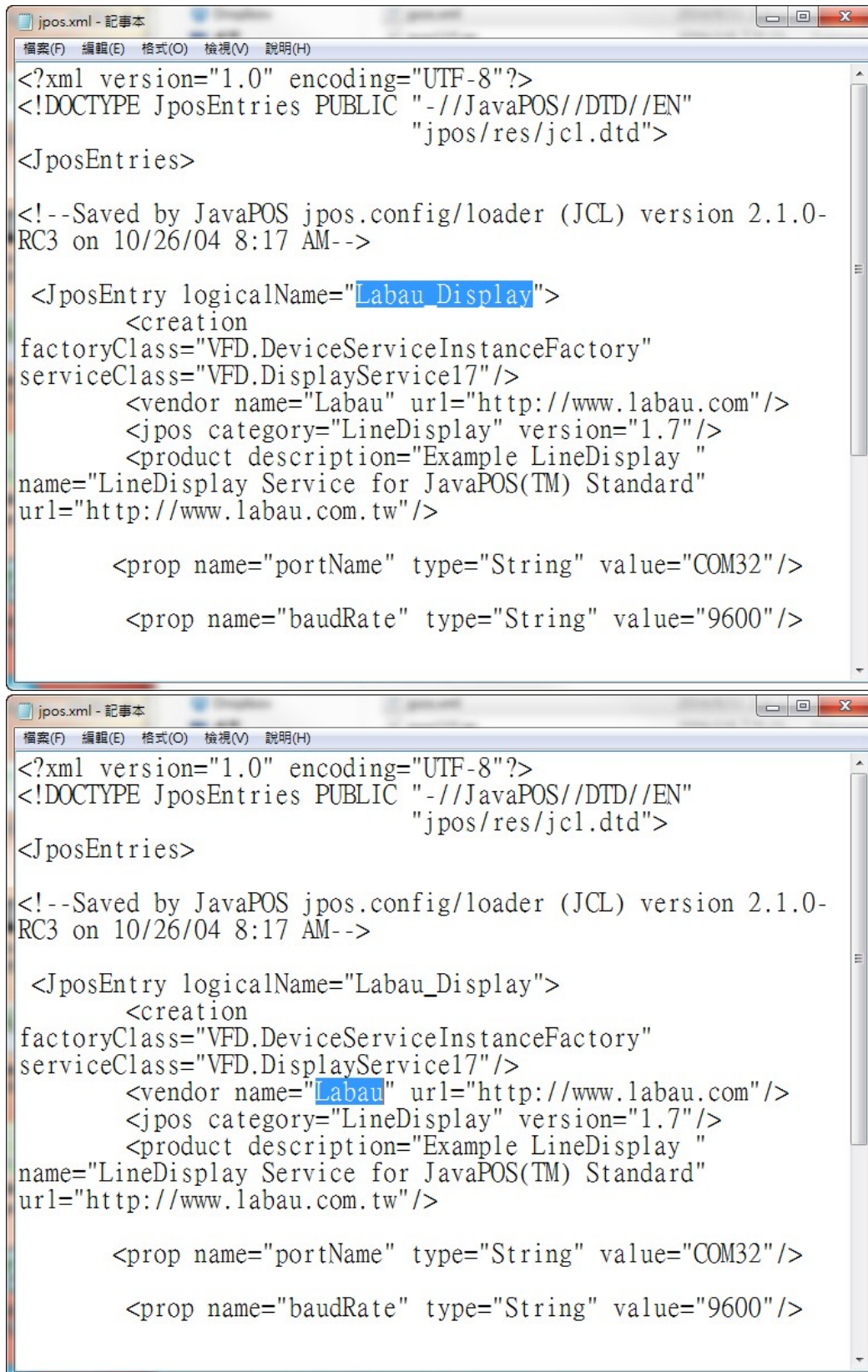
The screenshot shows a Windows Explorer window with the address bar set to 'jpos'. The file list contains the following items:

名稱	修改日期	類型	大小
jpos	2015/1/14 下午 0...	檔案資料夾	
jpos.xml	2015/1/14 下午 0...	XML Document	2 KB
jpos110.jar	2006/2/8 下午 05...	Executable Jar File	422 KB
POSTest.bat	2013/9/3 下午 04...	Windows 批次檔案	1 KB
postest.jar	2014/3/3 下午 06...	Executable Jar File	348 KB
POSTest.sh	2014/8/5 下午 05...	SH 檔案	1 KB
sampleld.jar	2005/11/18 下午 ...	Executable Jar File	13 KB
VFD.jar	2014/5/15 下午 0...	Executable Jar File	61 KB
xerces.jar	2001/8/20 下午 0...	Executable Jar File	1,767 KB

2. Then right click the file “jpos.xml”, then select “Edit”.



3. Then you can modify the **LogicalName** and **Vendorname** as you want.



```
<?xml version="1.0" encoding="UTF-8"?>
<!DOCTYPE JposEntries PUBLIC "-//JavaPOS//DTD//EN"
                        "jpos/res/jcl.dtd">

<JposEntries>

<!--Saved by JavaPOS jpos.config/loader (JCL) version 2.1.0-
RC3 on 10/26/04 8:17 AM-->

  <JposEntry logicalName="Labau_Display">
    <creation
factoryClass="VFD.DeviceServiceInstanceFactory"
serviceClass="VFD.DisplayService17"/>
    <vendor name="Labau" url="http://www.labau.com"/>
    <jpos category="LineDisplay" version="1.7"/>
    <product description="Example LineDisplay "
name="LineDisplay Service for JavaPOS(TM) Standard"
url="http://www.labau.com.tw"/>

    <prop name="portName" type="String" value="COM32"/>
    <prop name="baudRate" type="String" value="9600"/>

  </JposEntry>

</JposEntries>
```

4. Please revise the “**Com port**” description in the xml file also.

And remember to save the file when you leave.



```
<?xml version="1.0" encoding="UTF-8"?>
<!DOCTYPE JposEntries PUBLIC "-//JavaPOS//DTD//EN"
        "jpos/res/jcl.dtd">
<JposEntries>

<!-- Saved by JavaPOS jpos.config/loader (JCL) version 2.1.0-RC3 on 10/26/04 8:17 AM-->

  <JposEntry logicalName="Labau_Display">
    <creation
factoryClass="VFD.DeviceServiceInstanceFactory"
serviceClass="VFD.DisplayService17"/>
    <vendor name="Labau" url="http://www.labau.com"/>
    <jpos category="LineDisplay" version="1.7"/>
    <product description="Example LineDisplay "
name="LineDisplay Service for JavaPOS(TM) Standard"
url="http://www.labau.com.tw"/>

    <prop name="portName" type="String" value="COM32"/>

    <prop name="baudRate" type="String" value="9600"/>
```



```
<?xml version="1.0" encoding="UTF-8"?>
<!DOCTYPE JposEntries PUBLIC "-//JavaPOS//DTD//EN"
        "jpos/res/jcl.dtd">
<JposEntries>

<!-- Saved by JavaPOS jpos.config/loader (JCL) version 2.1.0-RC3 on 10/26/04 8:17 AM-->

  <JposEntry logicalName="Labau_Display">
    <creation
factoryClass="VFD.DeviceServiceInstanceFactory"
serviceClass="VFD.DisplayService17"/>
    <vendor name="Software" url="http://www.labau.com"/>
    <jpos category="LineDisplay" version="1.7"/>
    <product description="Example LineDisplay "
name="LineDisplay Service for JavaPOS(TM) Standard"
url="http://www.labau.com.tw"/>

    <prop name="portName" type="String" value="COM32"/>

    <prop name="baudRate" type="String" value="9600"/>
```

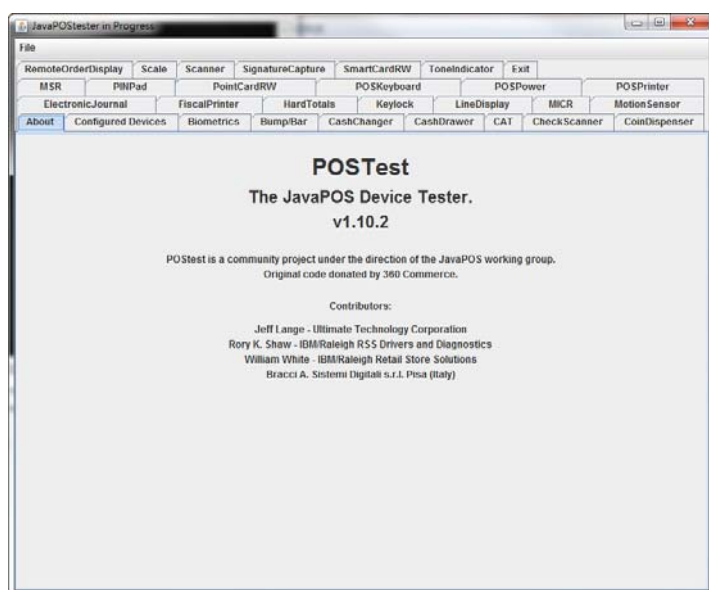
記事本

是否要儲存對
C:\Users\jessie.LABAUT420s\Desktop\jpos.xml
所做的變更?

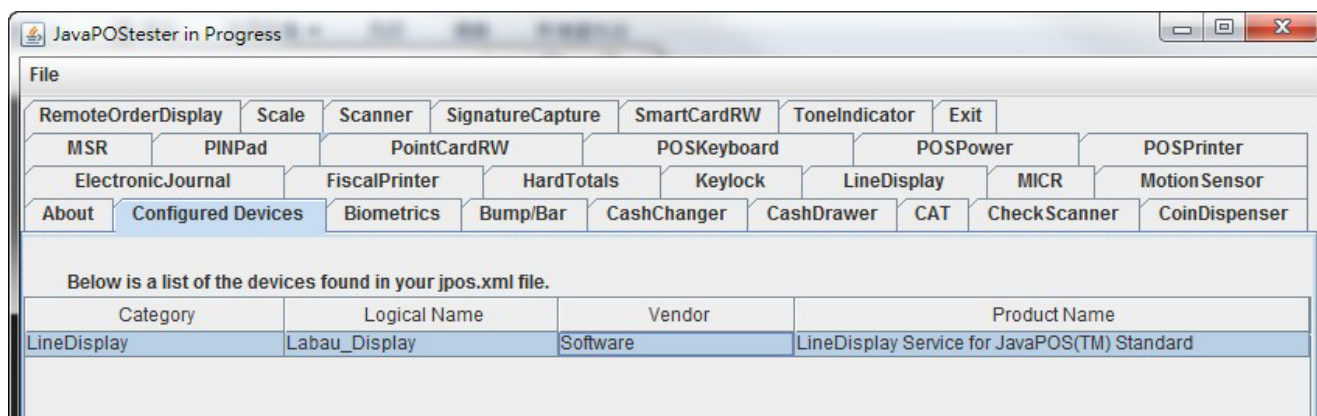
儲存(S) 不要儲存(N) 取消

- After saved the jpos.xml file, please double clicking the file “**POStest.bat**” to start up the testing AP.

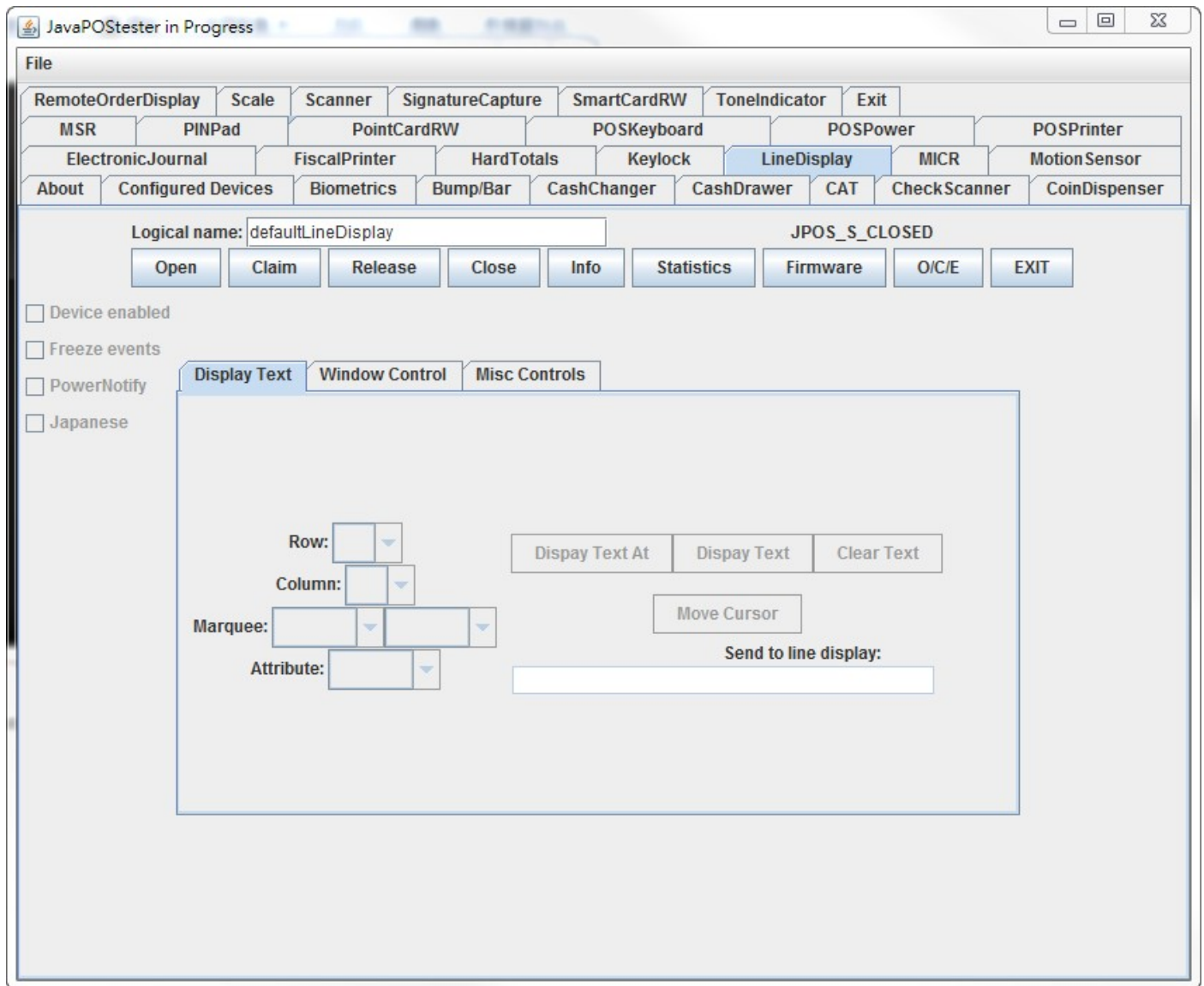
jpos	2015/1/14 下午 0...	檔案資料夾	
jpos.xml	2014/8/11 上午 1...	XML Document	2 KB
jpos110.jar	2006/2/8 下午 05...	Executable Jar File	422 KB
POStest.bat	2013/9/3 下午 04...	Windows 批次檔案	1 KB
postest.jar	2014/3/3 下午 06...	Executable Jar File	348 KB
POStest.sh	2014/8/5 下午 05...	SH 檔案	1 KB
sampleld.jar	2005/11/18 下午 ...	Executable Jar File	13 KB
VFD.jar	2014/5/15 下午 0...	Executable Jar File	61 KB
xerces.jar	2001/8/20 下午 0...	Executable Jar File	1,767 KB



- Then all the information you revise would be shown in the “**configured Devices**” sheet.



7. And you can start the testing in “**LineDisplay**” Sheet.



*****The End*****